

PROJECT DATA SHEET **C11-30**

**FEASIBILITY STUDY OF THE WATER SUPPLY TO LARGE MAPUTO,  
INCLUDING AN EXECUTIVE PROJECT**

---

**About the Project**

In the Feasibility Study phase, CONSULTEC was responsible for the following activities:

- Collection and analysis of information on the current state of the water supply system in Maputo;
- Participation in the study of comparison of several options on how to bring water to the city of Maputo.

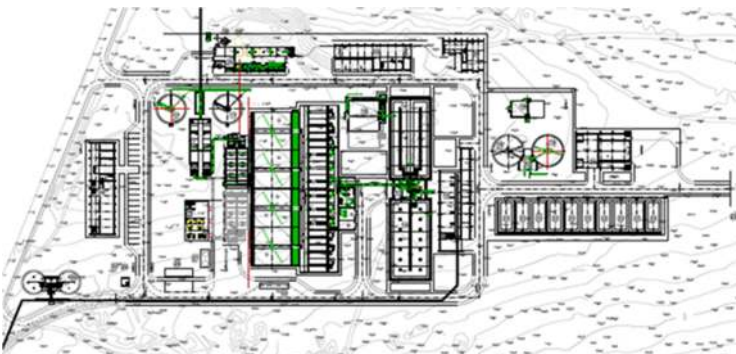
In the Executive Project phase:

- Structural design of more than thirty different buildings and structures.

Design of electrical components:

- Connection to the main grid, transmission lines and electrical installations;
- Coordination of environmental studies with the company that was developing the environmental impact study;
- Collaboration in economic and financial studies;
- Preparation of budget estimates and lists of quantities for some components of the work.

**Gallery**



**Information**

**Activity:** Water

**Location:** Maputo Province - Mozambique

**Year:** 01.2012 - 02.2017

**Client:** FIPAG

**Associated Companies:**

COBA

**Staff Involved**

**Staff:** 4

**Men Month:** 2.5

**Team**

**Carlos Caupers** | Deputy Project Director

**Dasneiro Mataveia** | Electricity Component

**Vera Ribeiro** | Environmental Component